

Price,
quality, service
and a client-focused approach
is what makes PCF different.

Our custom solutions:

Forming Fabric Cleaners • Dryer Fabric Cleaners • Press Felt Cleaners • Passivation Systems • Tail Cutters • Maintenance & Repairs

PCF Maintenance bv / PCF Asia bv

T: +31 43 365 2077 ludofransen@pcfmaintenance.nl
www.pcfmaintenance.nl

M: +31 6 506 32419 Weerterveld 69, 6231NC Meerssen
The Netherlands

Content

- Company history, global offices and products 3
- PCF Tail Cutter / PCF Tail & Deckle Cutter, for wet section 6
- PCF Tail Cutters for dryer section 8
- PCF Tail Cutter with fixed knife 9
- PCF Tail Cutter with rotating knife 10
- PCF Tail Cutter with HP water needle jet / PCF Tail & Deckle Cutter with HP water needle jets 11
- PCF Forming Fabric Cleaner 13
- PCF Press Felt Cleaner 15
- PCF Press Felt Cleaner with Moisture and Permeability measurement 17
- PCF Passivation System 18
- PCF Dryer Fabric Cleaner 20

Company history, global offices and products

PCF Maintenance bv was founded in 2008 as a maintenance and service company for the paper-, board and tissue industry. Now, 12 years later, PCF Maintenance bv/PCF Asia bv is a leading designer and producer of cleaning and cutting equipment for the paper-, board-, tissue- and non-woven industry.

PCF Maintenance bv/PCF Asia bv is a professional organization, staffed by highly motivated people with a high level of expertise and a great deal of experience.

We are working on an international level for various leading companies. Price, quality, service and a client-focused approach is what makes the difference between PCF Maintenance bv/PCF Asia bv and other competitors.

Our main products are:

PCF FF Cleaner (Forming Fabric Cleaner)

Continuous forming fabric cleaning equipment over the full fabric width by HP water and LP air.

PCF PF Cleaner (Press Felt Cleaner)

Continuous press felt cleaning equipment over the full length by LP water and compressed air, with or without moisture and permeability measuring.

PCF DF Cleaner (Dryer Fabric Cleaner)

Continuous and discontinuous dryer fabric cleaning equipment over the full dryer fabric width by HP water and compressed air.

PCF Cutting equipment

- PCF Tail cutter wet section
- PCF Tail and deckle cutter wet section
- PCF Tail cutter dry with fixed knife
- PCF Tail cutter dry with rotating knife
- PCF Tail cutter dry with HP water (up to 2500 bar)

PCF Passivation System

- Application:
- on dryer fabrics
 - on calander rolls
 - on dryer cylinder

PCF PF69 Passivation fluid

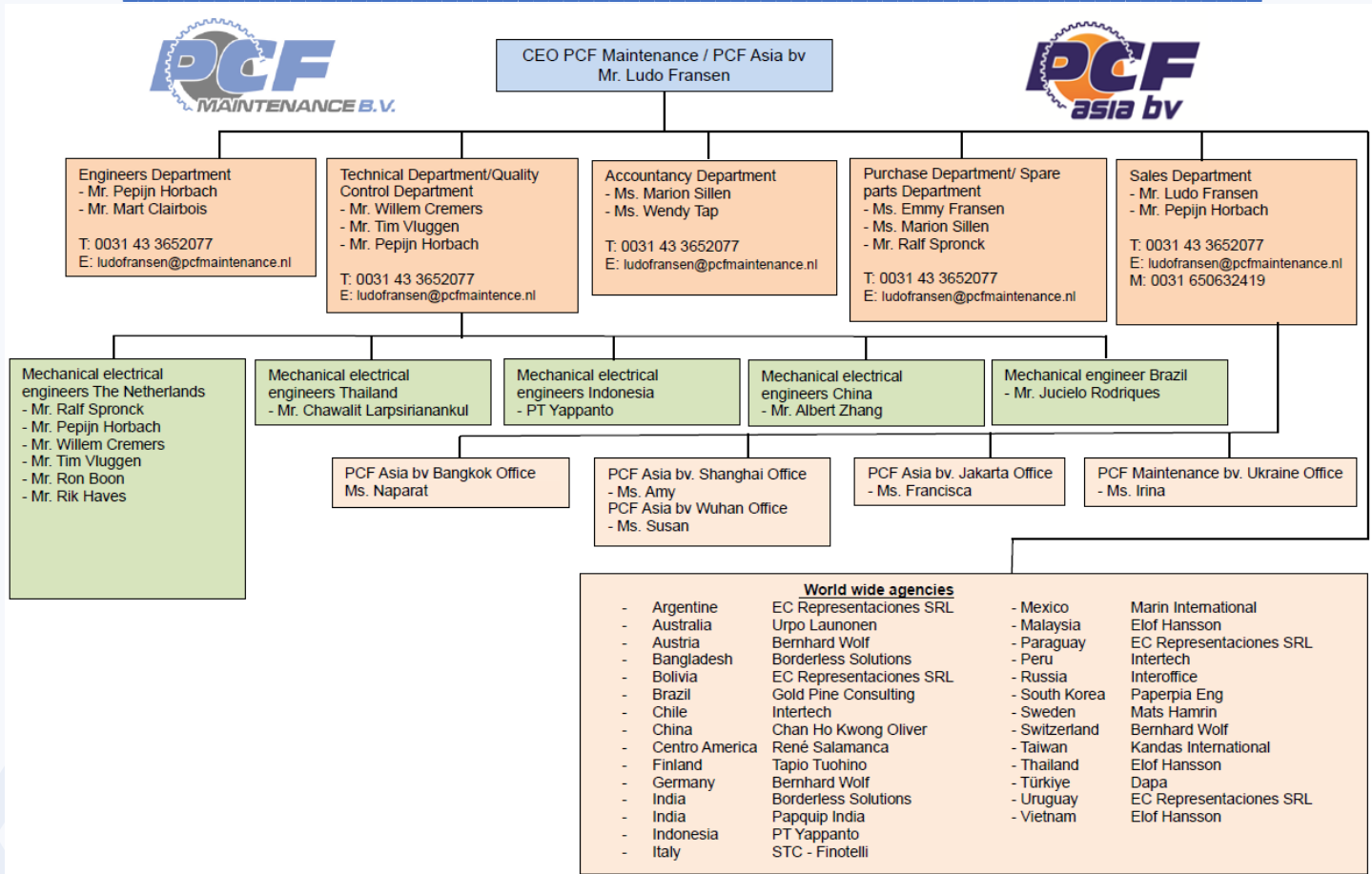
The PCF PF69 passivation fluid used in the paper and board manufacturing industries comply with the European, German and French regulations applying to paper or board materials intended for food contact and can be used safely for food packaging.

All equipment have been well exported to India, China, Thailand, South Africa, South America, Middle East, Indonesia, Australia and Europe.

Our Philosophy is based on a long term relationship with our clients, built on mutual trust and confidence. With over 25 years of professional experience we intend to provide service of high quality built upon following concepts:

- Competitive prices
- Superior customer service
- Timely and efficient delivery





Head office / world wide factory:

PCF Maintenance bv / PCF Asia bv

ludofransen@pcfmaintenance.nl

T: +31 43 365 2077

Global sales offices:

China office:

Ms. Xia Cailian (Ms. Amy)

amyxl_pcf@163.com

T: +86 136 8189 0214

Ms. Li Zhimin (Ms. Susan)

susan7161_pcf@163.com

T: +86 159 2706 7646

Indonesia office:

Ms. Lucy Francisca Mardiasih

francisca.pcfasia@gmail.com

T: +62 813 8319 8079

Thailand office:

Ms. Naparat Pronvilaimongkol

napat.pcfasia@gmail.com

T: +66 863 585 163

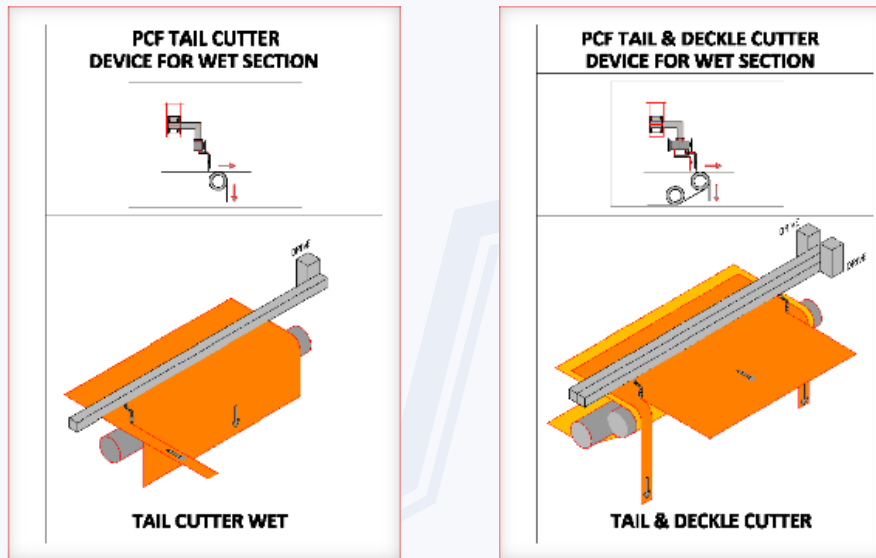
Ukraine office:

Mr. Iryna Uzarevych

pcfmaintenance.neth@gmail.com

T: +380 639 303 551

PCF Tail Cutter / PCF Tail & Deckle Cutter, for wet section



- Traverse beam(s) constructed in material stainless steel AISI316
- PCF Tail Cutter is designed with one needle jet nozzle
- PCF Tail & Deckle Cutter is designed with two needle jet nozzles
PCF Tail & Deckle Cutter nozzles can be adjusted independently
- Available in the following operation designs:
 - Manual operation by hand wheel
 - Automatic operation by non-contact sensor switches
 - Fully automatic operation by PLC control
- Water pressure: 4 - 6 bar
- In order to prevent build-up of dirt, the design includes an air curtain surrounding the nozzles
- The mill water supply can be used, no extra pump is required
- Nozzle angle adjustable



PCF Tail Cutter for wet section in operation

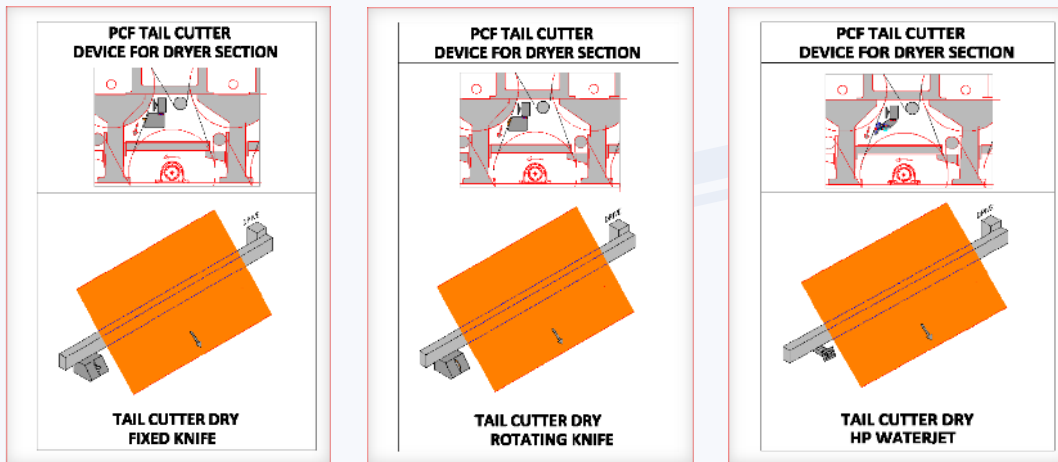


PCF Tail & Deckle Cutter for wet section in operation



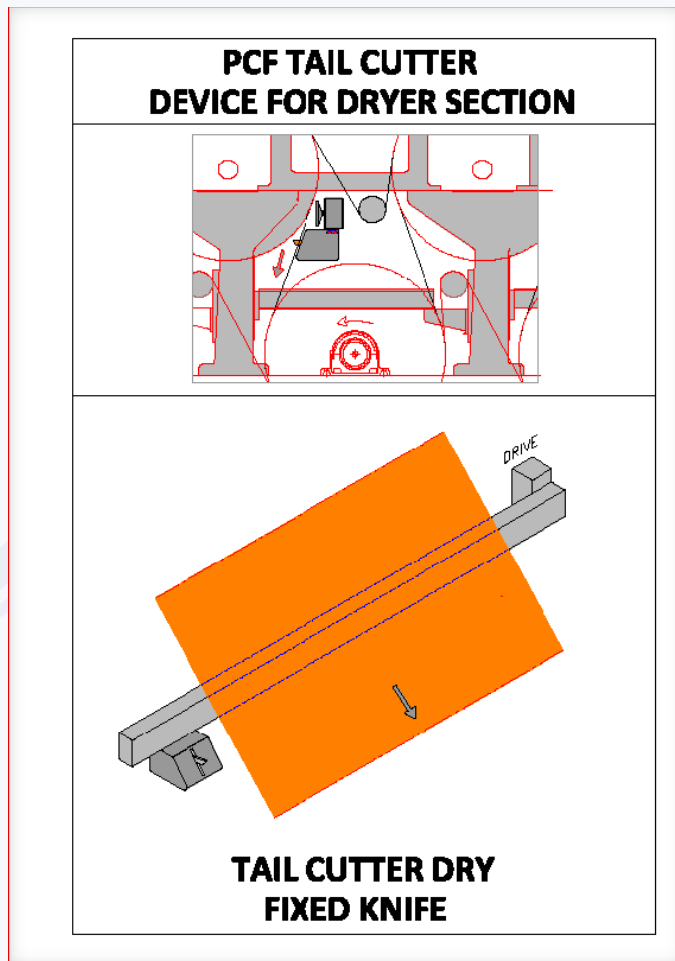
Pump unit trim squirts and PCF Tail Cutter

PCF Tail Cutters for dryer section



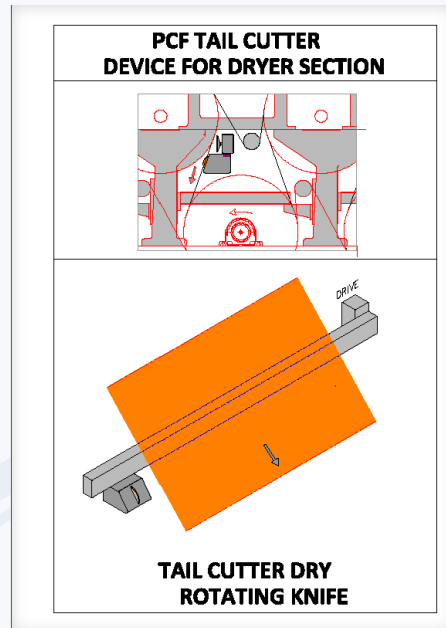
- The PCF Tail Cutter for dryer section is available in the following designs:
 - PCF Tail Cutter with fixed knife
 - PCF Tail Cutter with rotating knife
 - PCF Tail Cutter with HP water needle jets
 - PCF Tail & Deckle Cutter with HP water needle jets
- Traverse beam(s) constructed in material stainless steel AISI316
- Available in the following operation designs:
 - Manual operation by hand wheel
 - Automatic operation by non-contact sensor switches
 - Fully automatic operation by PLC control

PCF Tail Cutter with fixed knife



- Fixed knife is made of hardened steel
- Heat resistant pneumatic cylinder, for movement of the knife in and out of the paper
- Fixed knife is encased in a protective guide hood:
 - Constructed in material stainless steel AISI304
 - An equal cut is assured by means of a vacuum pipe affixed to the knife hood, which sucks the paper sheet parallel against the hood
- Application:
 - Grammage: up to 2000gr/m²
 - Speed: 300m/min
 - PM width: up to 3000mm

PCF Tail Cutter with rotating knife

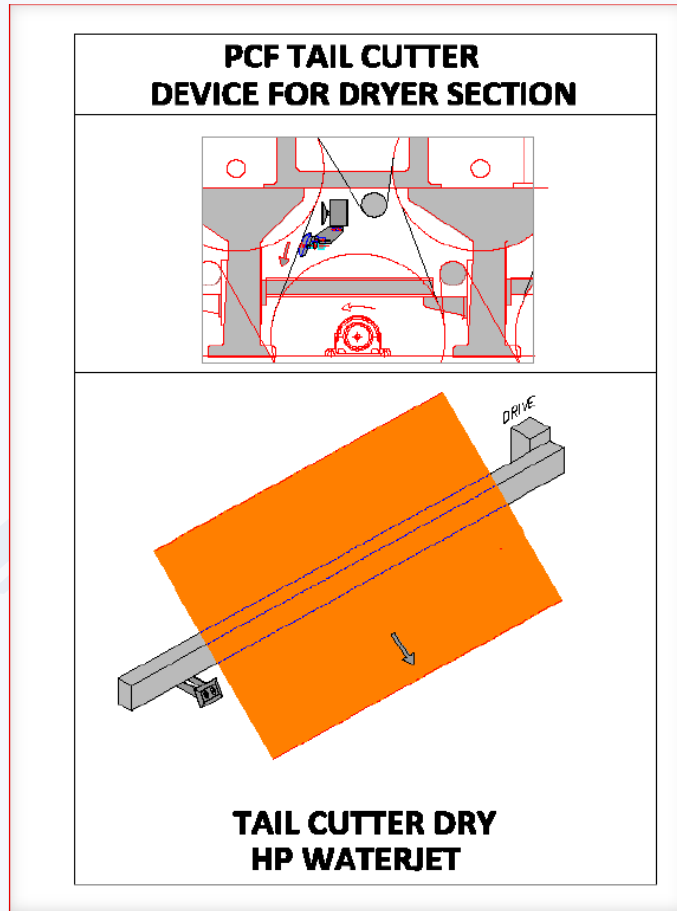


- The rotating knife is made of hardened steel
- Heat resistant pneumatic cylinder, for movement of knife in and out of the paper
- Rotating knife can be driven by air motor or electrical motor
- Rotating knife is encased in a protective guide hood:
 - Constructed in material stainless steel AISI304
 - An equal cut is assured by means of a vacuum pipe affixed to the knife hood, which sucks the paper sheet parallel against the hood
- Application:
 - Grammage: up to 2000gr/m²
 - Speed: 2000m/min
 - PM width: up to 12000mm



PCF Tail Cutter for dryer section with Rotating Knife in operation

**PCF Tail Cutter with HP water needle jet /
PCF Tail & Deckle Cutter with HP water needle jets**



- Nozzles are made in material stainless steel AISI304 with ruby inserts
- High pressure water nozzles ensure a sharp and equal cut
- Nozzles are encased in a protective guide hood
- A sharp and equal cut is assured by means of a vacuum pipe affixed to the guide hood, which sucks the paper sheet parallel against the hood
- The system can operate with water pressure up to 2500 bar
- Application:
 - Grammage: up to 500gr/m²
 - Speed: 2000m/min
 - PM width: up to 12000mm
- Tail & Deckle Cutter with HP water needle jets:
 - Identical design, but with two separate nozzles instead of one.



PCF Tail & Deckle Cutter for dry section, with HP water needle jets in operation



PCF Tail Cutter for dry section, with HP water needle jets

PCF Forming Fabric Cleaner



- PCF Forming Fabric Cleaners can be installed in top or bottom position of the forming section, or on both positions
- Constructed in material stainless steel AISI316
- Brackets for PCF FF Cleaner in top position include cantilever construction
- PCF Forming Fabric Cleaners are provided with needle jet nozzles:
 - Number of nozzles dependent on fabric width and machine speed
 - Nozzle orifice: typically 0.3mm
 - Stainless steel AISI316 nozzle body, with sapphire insert and filter
- Cleaning unit is equipped with fixed needle jet nozzles, air pipe and silicon strip around the entire unit for mist free operation.

The PCF Forming Fabric Cleaner has numerous advantages over oscillating showers:

- Absolute equal cleaning performance over the entire fabric width
- No nozzle overlap
- No stripes in the forming fabric
- Fabric lifetime is increased, saving fabric costs
- Significantly reduced electricity and water consumption
- Reduced sheet breaks
- 100% mist free operation
- Nozzle check during production is possible
- increases time and paper machine efficiency

The PCF Forming Fabric Cleaner saves water compared to oscillating showers:

HP Oscillating shower	PCF Forming Fabric Cleaner
Forming fabric width: 7000mm	Forming fabric width: 7000mm
Nozzle count: 70 pieces	Nozzle count: 10 pieces
Nozzle orifice: 1.0mm	Nozzle orifice: 0.3mm
Water pressure: 30 bar	Water pressure: 50 bar
Water consumption: 70 x 2.7 ltr/ min = 189 ltr / min	Water consumption: 10 x 0.45 ltr/min = 4,5 ltr / min

Total decreased water consumption:
189 ltr/min – 4.5 ltr/min = 184.5 ltr/min

Total decreased water consumption per year:
184.5 ltr/min x 60 min x 24 hours x 360 days = **95.645m³ saved per year**



PCF Forming Fabric Cleaner in operation

PCF Press Felt Cleaner



- PCF Press Felt Cleaners can be installed in the press section, in front of the vacuum boxes.
- Constructed in material stainless steel AISI316
- PCF Press Felt Cleaners are equipped with needle jet nozzles, installed in one unit:
 - Number of nozzles dependent on fabric width and machine speed
 - Nozzle orifice: typically 0.8mm
 - Stainless steel AISI316 nozzle body, with sapphire insert and filter

The PCF Press Felt Cleaner has numerous advantages over oscillating showers:

- Reduced water consumption
- Absolute equal cleaning performance over the entire fabric width
- No nozzle overlap
- No stripes in the press felt
- Press felt lifetime is increased, saving replacement costs
- Significantly reduced electricity and chemical consumption
- Optimized press felt water permeability and moisture cross profile
- Increased press felt dewater capacity
- Nozzle check during production is possible
- Reduction of paper breaks
- increases tissue and paper machine efficiency

The Press Felt Cleaner saves water compared to oscillating showers:

LP Oscillating shower	PCF Press Felt Cleaner
Press felt width: 7000mm	Press felt width: 7000mm
Nozzle count: 70 pieces	Nozzle count: 13 pieces
Nozzle orifice: 0.8mm	Nozzle orifice: 0.8mm
Water pressure: 20 bar	Water pressure: 25 bar
Water consumption: 70 x 1.3 ltr/ min = 91 ltr / min	Water consumption: 13 x 1.5 ltr/min = 19.5 ltr / min

Total decreased water consumption:
91 ltr/min – 19.5 ltr/min = 71.5 ltr / min

Total decreased water consumption per year:
71.5 ltr/min x 60 min x 24 hours x 360 days = **37.065 m³ saved per year**



Cleaning with oscillating showers results in stripes on the press felt



The PCF Press Felt Cleaner does not leave any stripes

PCF Press Felt Cleaner with Moisture and Permeability measurement



- The PCF Press Felt Cleaner can be delivered with an optional moisture and permeability measurement unit
- The installation can simultaneously clean the press felt and determine the relative humidity and water permeability of the felt by means of a moisture sensor
- The sensor is integrated into the cleaning unit, providing measurements for the full press felt width during normal traversing operation
- All measured values are stored in data blocks, are subsequently processed and can be used for felt cleaning optimization
- Increased safety; no manual measurements required during production
- Extended life of the press felt
- Increased PM speed possible
- Optimal uniform press felt cleaning
- Optimal moisture profile

PCF Passivation System



Passivation Nozzle



PCF PF69 silicone fluid tank with dosing pump

- The PCF Passivation System projects aerosol silicone fluid through a custom-designed combined air/fluid nozzle as a preventive cleaning solution
- A dosing pump delivers 5 to 15 ml/min to the nozzle; a small amount of air is added to turn the fluid to aerosol
- The desired distribution is provided by the traversing unit
- Constructed of stainless steel AISI304

The PCF Passivation System in combination with the PCF PF69 fluid has the following advantages:

- Passivation considerably reduces surface contamination on dryer fabrics, dryer cylinders and guide rolls within the dryer section
- Improved sheet quality and overall paper production
- Reduced sheet breaks
- Reduced cleaning works
- Reduced solvent use, increasing safety
- Lubrication for doctor blades, increasing blade lifetime



The PCF PF69 silicone fluid used in the PCF Passivation System complies with European regulations applying to paper/board materials intended for food contact, and can be used safely for food packaging.



Dosing pump unit



Custom-designed passivation nozzle

PCF PF69		 PCF Maintenance bv Weerterveld 69 6231 NC Meerssen Netherlands T: +31 43 365 2077 E: judofransen@pcfmaintenance.nl
<p>WAARSCHUWING</p> <p>H317 Kan een allergische huidreactie veroorzaken.</p> <p>P261 Inademmen van stof/rook/gas/nevel/damp/spuitnevel vermijden</p> <p>P272 Verontreinigde werkkleding mag de ruimte niet verlaten.</p> <p>P280 Beschermende handschoenen, beschermende kleding/oogbescherming/gebelsbescherming dragen.</p> <p>P302+P352 BIJ CONTACT MET DE HUID: met veel water en zeep wassen.</p> <p>P333+P313 Bij huidirritatie of uitslag: een arts raadplegen.</p> <p>P501 Inhoud / verpakking afvoeren naar een geautoriseerde afvalverwijderingsinstallatie.</p> <p>Bevat een mengsel van: 5-Chloro-2-Methyl-2H-izothiazol-3-One (EINECS 247-500-7) en 2-Methyl-2H-izothiazol-3-One (EINECS 220-239-6) (3:1)</p>	<p>ACHTUNG</p> <p>H317 Kann allergische Hautreaktionen verursachen.</p> <p>P261 Einatmen von Staub/Rauch/Gas/Nebel/Dampf/Aerosol vermeiden.</p> <p>P272 Kontaminierte Arbeitskleidung nicht außerhalb des Arbeitsplatzes tragen.</p> <p>P280 Schutzhandschuhe/Schutzkleidung/Augenschutz/Gesichtsschutz tragen.</p> <p>BEI BERÜHRUNG MIT DER HAUT: mit viel Wasser und Seife waschen.</p> <p>BEI HAUTREIZUNG oder -ausschlag: ärztlichen Rat einholen/ärztliche Hilfe hinzuziehen.</p> <p>P501 Inhalt/Behälter in eine autorisierte Entsorgungseinrichtung zuführen.</p> <p>Gemisch aus: 5-CHLOR-2-METHYL-2 H-ISOTHIAZOL-3-ON EN 2-METHYL-2 H-ISOTHIAZOL-3-ON (3:1); CAS-Nr.: 55965-84-9</p>	
<p>WARNING</p> <p>H317 May cause an allergic skin reaction.</p> <p>P261 Avoid breathing dust/fume/gas/mist/vapours/spray.</p> <p>P272 Contaminated work clothing should not be allowed out of the workplace.</p> <p>P280 Wear protective gloves/protective clothing/eye protection/face protection.</p> <p>P302+P352 IF ON SKIN: wash with plenty of soap and water.</p> <p>P333+P313 If skin irritation or rash occurs: Dispose of contents/container to an authorized waste disposal facility.</p> <p>Contains A Mixture Of: 5-Chloro-2-Methyl-2H-izothiazol-3-One And 2-Methyl-2H-izothiazol-3-One (3:1)</p>	<p>DIKKAT</p> <p>H317 Allergik deri reaksiyonuna yol açabilir</p> <p>P261 Tozunü/dumanını/gazını/bisli/buharını/spreyni solumaktan kaçın</p> <p>P272 Kirilenmiş kıyafetleri iş yeri dışına çıkarmayın</p> <p>P280 Koryucuyu eldiven/koryucuyu kıyafetligiz koryucuyu/iz koryucuyu kullanın</p> <p>P302+P352 DERE İLE TEMAS HALİNDE İSE: Bol sabun ve su ile yıkayın</p> <p>P333+P313 Ciltte tahriş veya kaşıntı söz konusu ise: Tıbbi yardım/müdahale alın</p> <p>P 501 İçeriği/İhtab; yerel/bölgesel/ulusal/uluslararası tözöjye uygun olarak, zararı veya özei altık toplama noktasında bertaraf edin</p> <p>5-Kloro-2-Metil-2H-izotiazol-3-Bir ve 2-Metil-2H-izotiazol-3-Bir (3-1) Karşımı İçerir</p>	
<p>ATTENTION</p> <p>H317 Peut provoquer une allergie cutanée.</p> <p>P261 Éviter de respirer les poussières/fumées/gaz/brouillards/vapeurs/aérosols.</p> <p>P272 Les vêtements de travail contaminés ne devraient pas sortir du lieu de travail.</p> <p>P280 Porter des gants de protection, un équipement de protection des yeux, des vêtements de protection.</p> <p>P302+P352 EN CAS DE CONTACT AVEC LA PEAU: laver abondamment à l'eau et au savon.</p> <p>P333+P313 En cas d'irritation ou d'éruption cutanée: consulter un médecin.</p> <p>P501 Éliminer le contenu/récipient dans une installation d'élimination des déchets autorisés.</p> <p>Mélange de: 5-chloro-2-méthyl-2H-izotiazol-3-ona [No. CE 247-500-7]; 2-méthyl-2H-izotiazol-3-ona [No. CE 220-239-6] (3:1)</p>	<p>OPAZORILO</p> <p>H317 Lahko povzroči alergijsko kožno reakcijo</p> <p>P261 Ne vdihavati prahu/dima/plina/meglice/hlapov/razpršila.</p> <p>P272 Kontaminirana delovna oblačila niso dovoljena zunaj delovnega mesta</p> <p>P280 Nositi zaščitne rokavice/zaščitno obleko/zaščito za oči/zaščito za obraz.</p> <p>P302+P352 ČE NA KOŽO: Umiti z veliko mila in vode</p> <p>P333+P313 Če pride do draženja kože ali izpuščajev, poiščite zdravniško pomoč</p> <p>P501 Odstraniti vsebino / posodo v pooblaščenem obratu za odstranjevanje odpadkov</p> <p>Vsebuje zmes: 5-Kloro-2-metil-2H-izotiazol-3-ona in 2-metil-2H-izotiazol-3-ona (3: 1)</p>	 BATCH No.

PCF Dryer Fabric Cleaner



- The PCF Dryer Fabric Cleaners can be installed in the dryer section, for continuous/discontinuous cleaning of the dryer fabric
- The PCF Dryer Fabric Cleaner uses HP water, air and a vacuum pipe for continuous and discontinuous cleaning
- Constructed in material stainless steel AISI304
- For best cleaning results, the PCF Dryer Fabric Cleaner should be installed against a dryer roll
- A stainless steel save-all, covered by a silicon strip, discharges all contamination to the Cleaner park position, preventing water and/or dust from being reflected onto the dryer fabric
- The PCF Dryer Fabric Cleaner can be used with needle jet (bronze) or flat spray (hardened stainless steel) nozzles, rated up to 700 bar water pressure
- Nozzles are installed in a movable header, making nozzle exchange much easier
- The Teflon cleaning head does not damage the dryer fabric

The PCF Dryer Fabric Cleaner has the following advantages:

- Increased CFM value
- Less contaminants on rolls, increased paper quality and less sheet breaks
- Reducing cleaning shutdowns and cleaning time, increasing production efficiency
- Increased dryer fabric lifetime